



REMINDER: GLEN EDEN MAJOR RAIL WORK

December 2024

Dear neighbour,

We are reminding you that our teams will soon start working near you to prepare the area in advance of installing a new crossover track structure. This essential work will take place from Friday 27 December through to Wednesday 15 January.

There will be 24/7 work on Friday 27 December to prepare the worksite. After this, work will take place during day shift (6am – 6pm) from Saturday 28 December through to Wednesday 8 January. Work will then be 24/7 again from Wednesday 8 January through to Wednesday 15 January.

We understand this will be disruptive and teams will complete the job as quickly and quietly as possible. Wherever possible the noisier works are planned for the daytime.

What we are doing:

We are completing major track works in your area. This work can generally only be done during extended periods when no or reduced commuter trains are running.

The work will see teams installing a new track structure called a double crossover between West Coast Rd and Glen Eden Station. This will help improve train service reliability as it allows trains to pass one another more easily. To do this we need to rebuild the track foundations as well as change the layout of the rails, overhead lines and signalling.

How this affects you:

There will be noise from machinery and heavy vehicles moving around as well as bright lights and KiwiRail teams in the area. Materials will generally be stored on rail land. Due to the narrow long nature of the rail network, teams will need access to the track and will travel from West Coast Road (please see overleaf for details).

Our staff are mindful of our rail neighbours and will work hard to minimise any disturbance. Wherever possible staff will aim to carry out noisier works during the day. However, despite their efforts this work may cause you some disturbance and we apologise in advance for this. Our staff will have dust mitigation in place throughout this work.

There will also be increased vehicle movements around West Coast Road and the local area so please take extra caution when in the area.

A Traffic Management Plan will be in place in the form of a single lane closure on West Coast Road for the duration of the works, as well as a full road closure of West Coast Road between 6am to 6pm on Wednesday 8 and Thursday 9 January.

Thanks for your patience while we carry out this important work - The KiwiRail team.
contactus@kiwirail.co.nz or 0800 801 070 ext 43042

UPDATED work dates

**6am – 6pm daily:
from Friday 27 December –
Wednesday 8 January**

**24/7 works:
Friday 27 December &
Wednesday 8 January –
Wednesday 15 January**

Worksite dates may change due to conditions and resource availability.

At times temporary traffic management will be required – please follow the signs.

Find out more

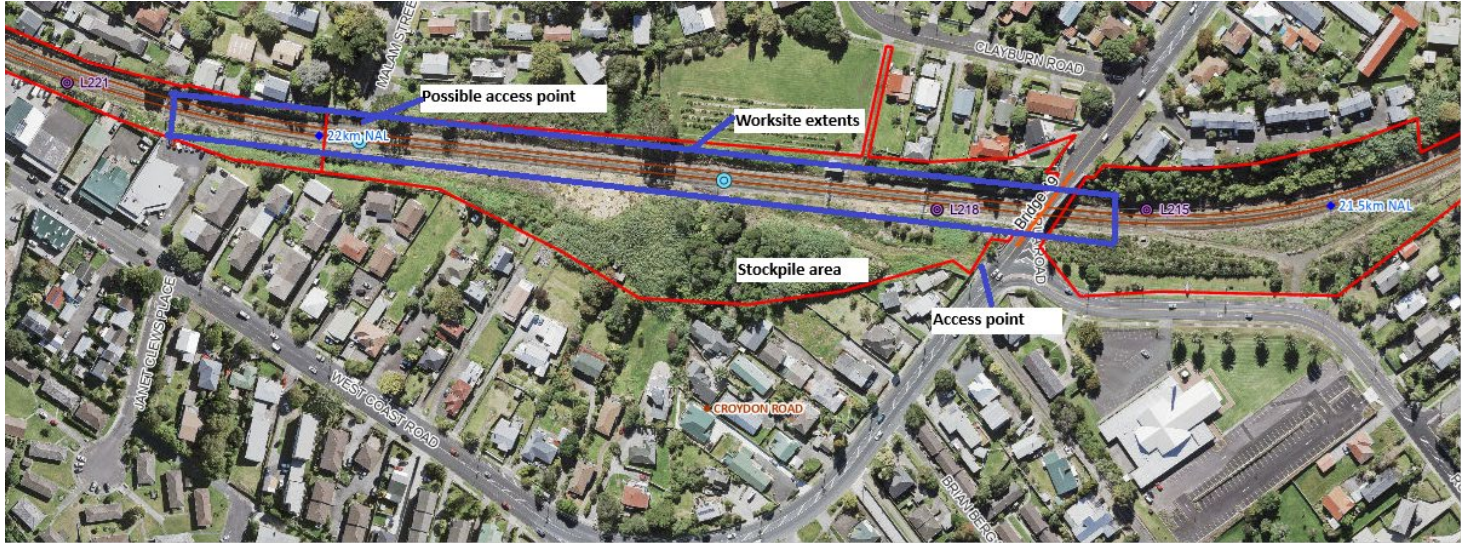
If you have any queries about our work, contact our Community Engagement Team via **contactus@kiwirail.co.nz** or **0800 801 070 ext 43042**

To find out about your public transport options during the Rail Network Rebuild visit www.at.govt.nz or call 09 366 6400.

ABOUT THIS CONSTRUCTION SITE

From Friday 27 December teams will start to prepare the areas around the construction sites. This phase and reconnecting the tracks at the end are usually the noisiest parts of the job. Once the track disconnection work is complete the main works can start. Teams will then reconnect the rails over the last few days of the network shutdown.

Please see map below for worksite information.



What are we doing?

Teams are installing a complex new track structure. To do this they need to rebuild the track foundations, improve the drainage and reconfiguring the overhead lines and signals to accommodate it. See below image of the worksite step up. This work will be completed in phases and much of it can only be done safely when no trains are running. The work will be done in stages:

1. Set up site
2. Cut and remove the existing track, sleepers on one set of tracks
3. Remove existing foundations
4. Rebuild and compact foundations
5. Reinstall track structure
6. Repeat steps 2-5
7. Install new complex track structure
8. Connect, re-align and balance new track
9. Connect signals ready for train services

