



QUAY PARK WORKS

December 2024

Dear neighbour,

KiwiRail teams will be undertaking various intensive works in the Quay Park area over the Christmas closure period.

This includes replacing the Quay Park Diamond, a complex piece of track infrastructure near The Strand overbridge, replacement of turnouts and major signaling work.

As these are large and complex jobs, they can only be undertaken when there are no passenger trains running.

Teams will also be accessing the rail corridor via Quay Park to reach various sites along the rail network and this section of track will be used to deliver materials inside the Britomart Tunnel.

Thank you for your on-going patience as we continue to undertake maintenance, and upgrade works on the rail tracks near your property.

What we are doing:

Upgrading the track and formations and undertaking maintenance work around the Quay Park area.

The work will involve removing track infrastructure, digging new formations, replacing with new assets and integrating it into the existing network.

This will be intensive work, involving rail grinding and cutting, digging new formations, welding and then putting into place the new turnouts. Once this has been done, the tamper will then tamp the new ballast into place.

There will also be many vehicles travelling in and out of the rail corridor at all times.

How this affects you:

There will be noise from heavy machinery, staff and vehicles moving around including the sound of vehicles reversing, which are required for safety purposes.

Multiple teams will be accessing the rail corridor via Quay Street, near The Strand overbridge and alongside Tamaki Drive.

Our staff and contractors are mindful of our rail neighbours and will work hard to minimise any disturbance, to get this essential work done as quickly and quietly as possible. However, despite their best efforts, this work may cause you some disturbance and we apologise for the inconvenience.

We are also aware that there will be NZTA road works in the area as part of their Summer Works. For more information visit: [SH1 and SH16 summer works – December 2024 to March 2025 | NZ Transport Agency Waka Kotahi](#) and email info@asm.nzta.govt.nz with any queries.

Upcoming Dates

27 December 2024 - 27 January 2025

27 December- 13 January 24/7 work

13 January- 27 January 6am-6pm

Please note that at times after 13 January, night works may still be required.

Find out more

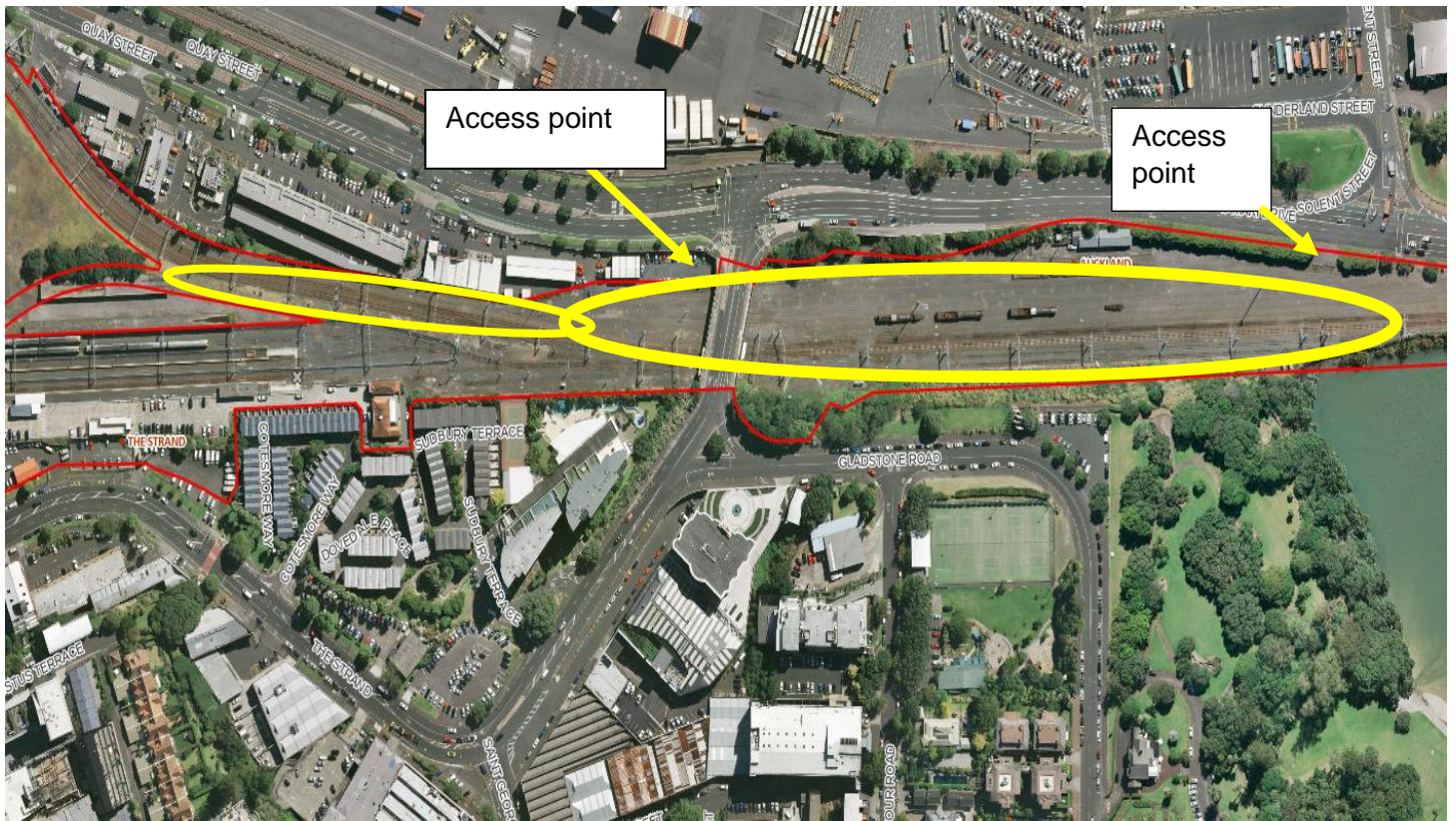
If you have any questions about our work, contact our Community Engagement Team via contactus@kiwirail.co.nz or 0800 801 070 ext 43042.



QUAY PARK WORKS

December 2024

Worksite



Thanks for your patience while we carry out this important work - The KiwiRail team.
contactus@kiwirail.co.nz or 0800 801 070 ext 43042

KiwiRail 